



WHEEL LOADER
ER420T

 Rated Load | 2000kg

 Rated Power | 53kW

 Net Weight | 5500kg

ER420T



 Tel: +86-532-80997859

 Website: www.everun.com

 Instagram: [everunmachinery](https://www.instagram.com/everunmachinery)

 Fax: +86-532-80993178

 Facebook: [everunmachinery](https://www.facebook.com/everunmachinery)

 LinkedIn: [Qindao Everun Machinery Co., Ltd](https://www.linkedin.com/company/qindao-everun-machinery-co-ltd)

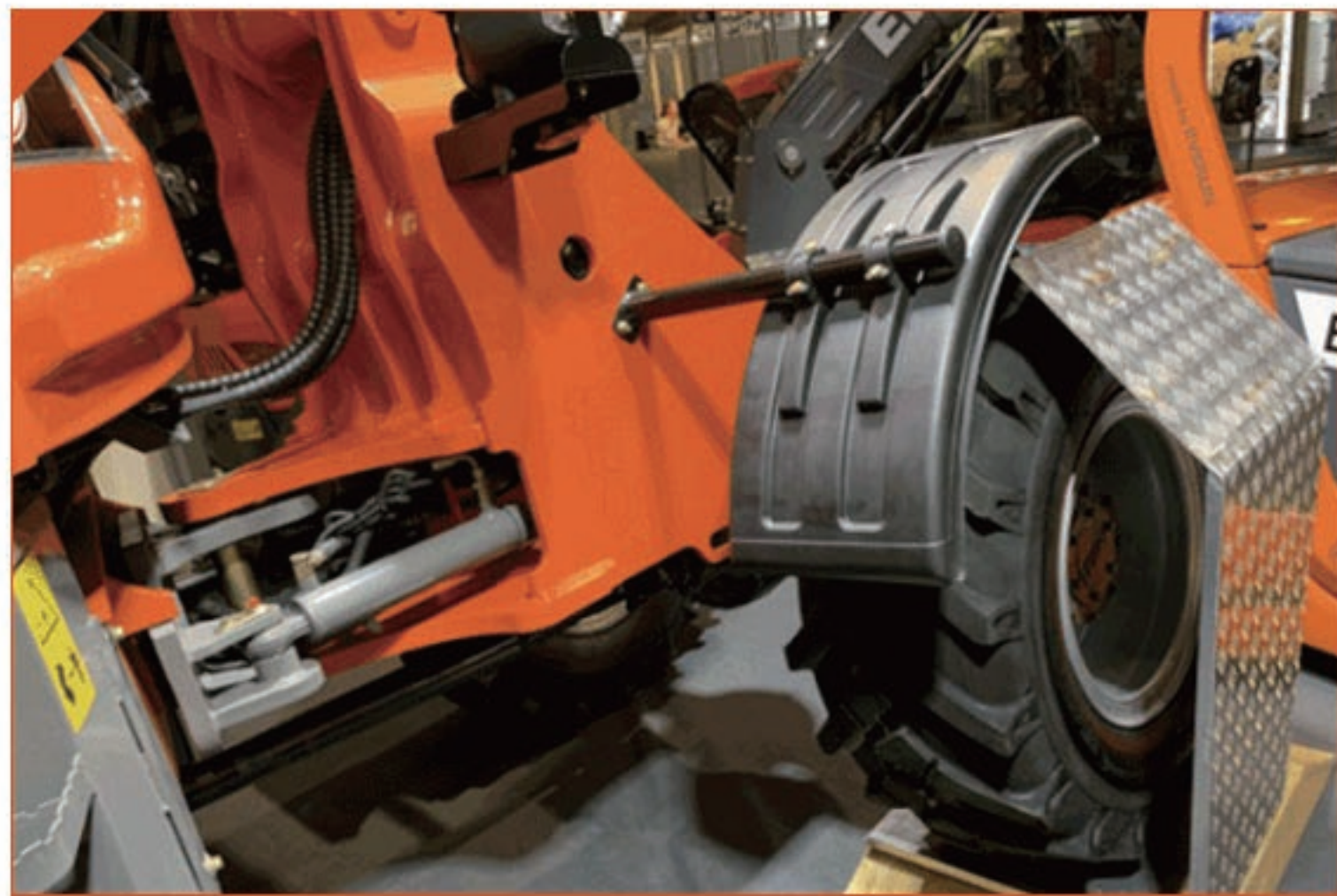
 Email: info@everun.com

 Youtube: [everunmachinery](https://www.youtube.com/everunmachinery)

QINGDAO EVERUN MACHINERY CO., LTD

ER420T | WHEEL LOADER

EVERUN[®]
SINCE 2007



• Everun articulated oscillating floating joint



• Standard wider 16/70-20 tubeless tires



• Bigger and stronger lifting cylinders



• Streamline designed engine hood & iron Casting rear bumper



• Easily accessible lubrication points



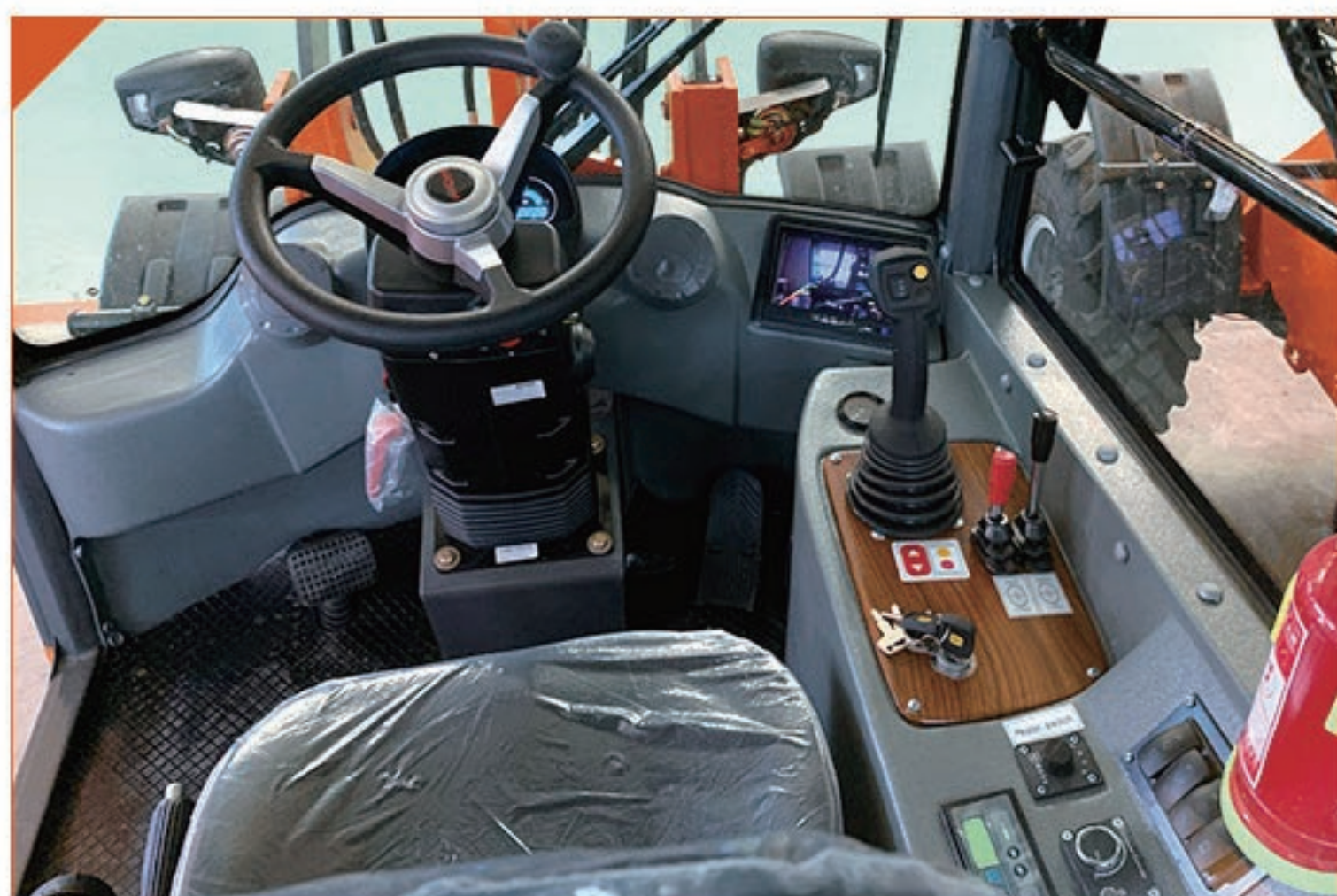
• Short hydraulic hose lengths



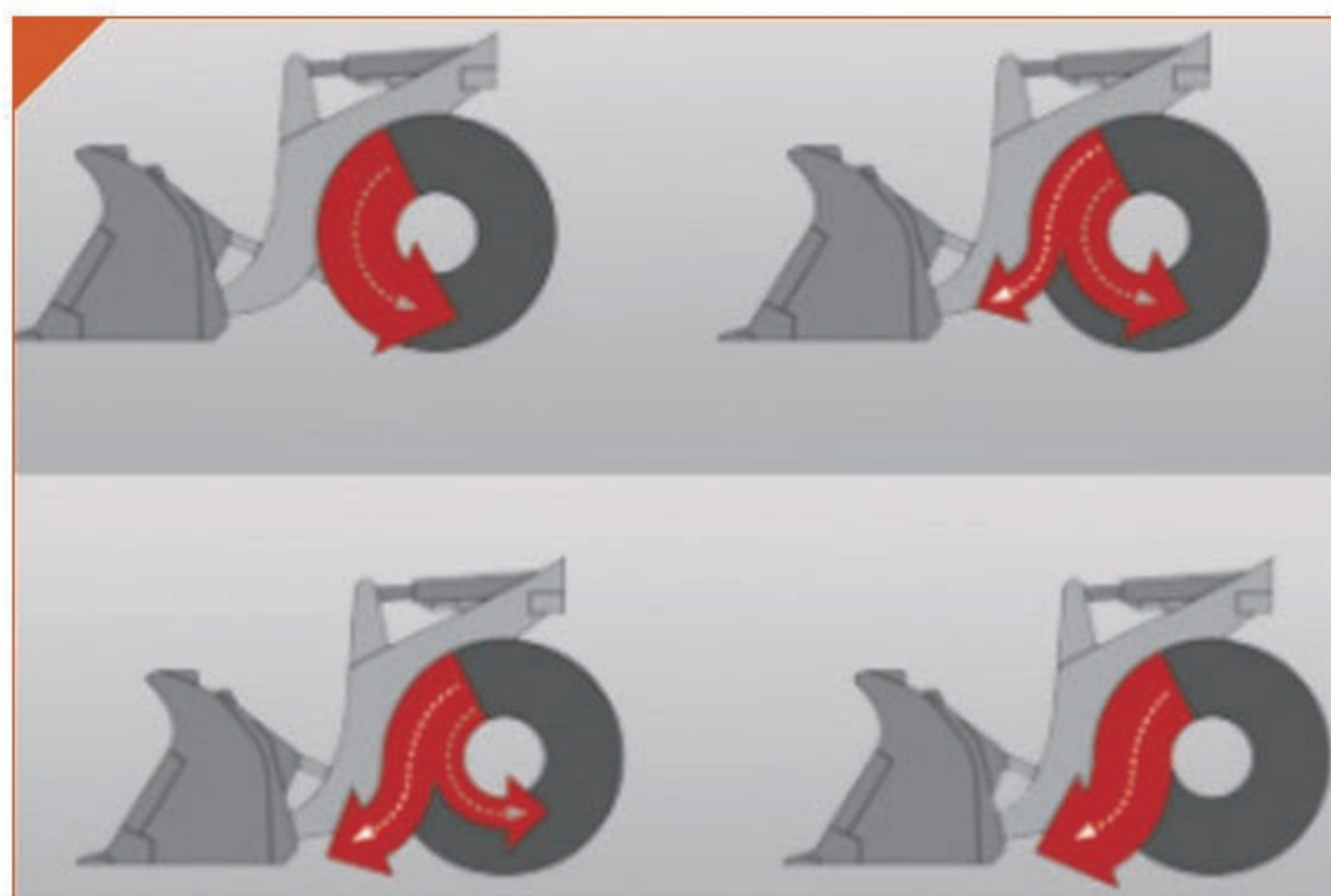
• ROPS & FOPS cabin with maintenance port



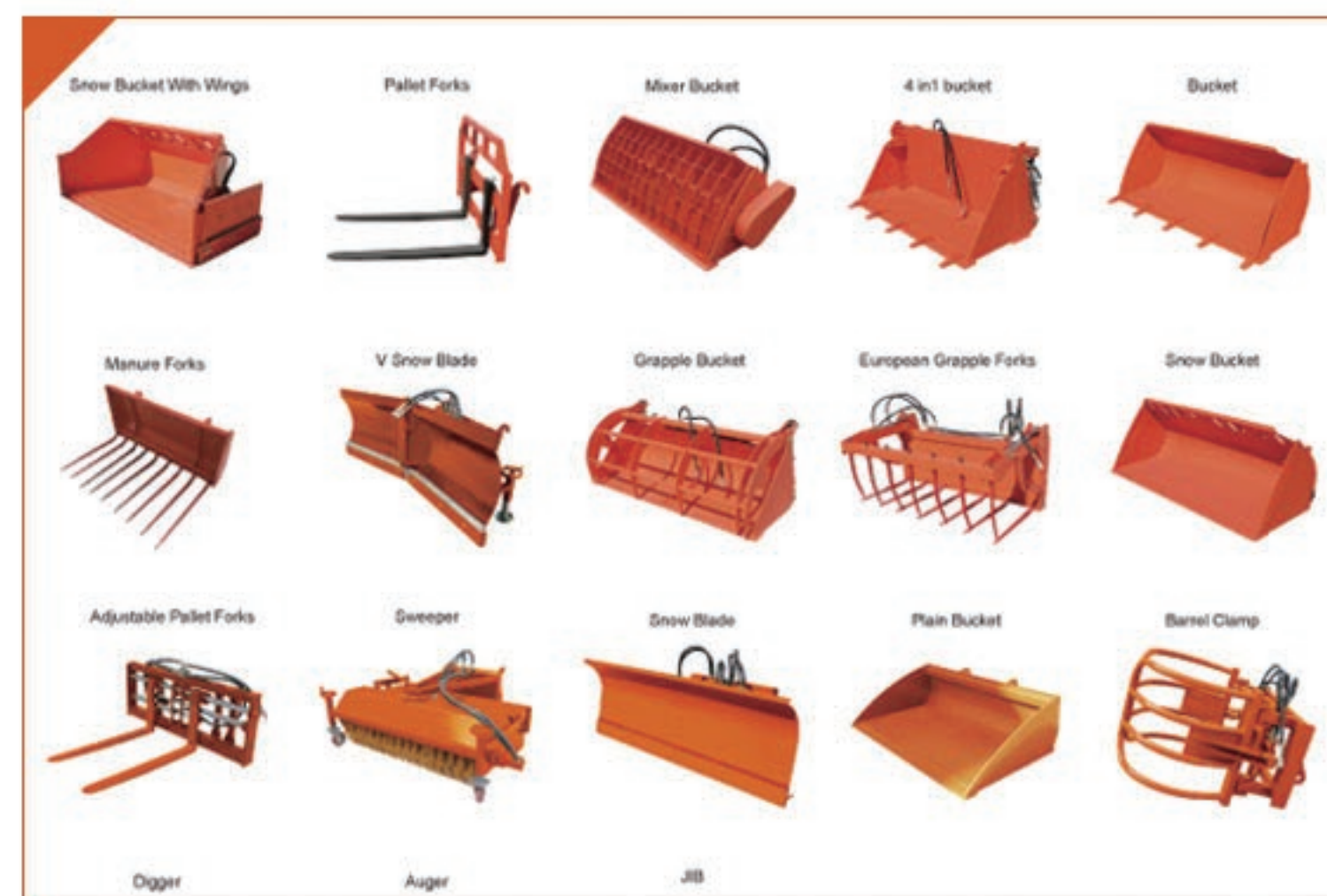
• Vibration-damped working area



• Ergonomic joystick



• Brake pedal & torque converter transmission system



• Large selection of attachments



• Large selection of tyres

Everun ER420T Wheel Loader with real CE certificate which is issued by TÜV Rheinland. New Rops & Fops cabin and new floating oscillating articulation guarantee a safer operation. With 2ton loading capacity and different attachments, not only have superior performance in agricultural and garden application, but also advanced for small constructions and teerain field application. It is the quick and easy solution to all of your day job.

Specifications

Engine Details

Model	Xichai 4DX21-72 Engine
Engine Type	In-line Arrangement,Water-cooled,Four-cycle Diesel Engine
Rated Power	53kW
Rated Speed	2400 r/min(rpm)
Fuel Consumption Ration In Standard Working Condition	230g/kW.h

Bucket

Bucket Capacity	0.67m ³
Bucket Width	2040mm
Bucket Type	Heavy-duty Bolt On Teeth
Rated Load	2000kg

Transmission System

Type	Fixed-spindle Power Shift
Shift Gear Control Oil Pressure	1.2-1.5 MPa
Rated Input Speed	2500(rpm)

Brake System

Service Brake	Four Wheel Hydraulic Spread-shoed Brake
Parking Brake	Hand Operated

Operating Specifications

Steering System	Articulated Frame With Hydraulic Power Steering
Minimum Turning Radius	5460mm
Driving System	Hydraulic Converter
Net Weight	5500kg

Overall Dimensions

Overall Length (bucket on ground)	5710mm
Overall Height	2800mm
Overall Width	2040mm

Tyre

Type Specification	16/70-20
--------------------	----------

QINGDAO EVERUN MACHINERY CO., LTD